



Faucets that leak can waste more than 400 gallons of water per month (gpm):

- 60 drops per minute = 192 gpm
- 90 drops per minute = 210 gpm
- 120 drops per minute = 429 gpm

Check faucets throughout the house, and repair them immediately. Also, turn off the water while brushing your teeth or shaving.

In the Laundry Room and Kitchen

Clothes washers use between 35-50 gallons of water per load (gpl). New, front-loading machines are more efficient, using between 18-20 gpl. To save even more water:

- Run a load only with a full machine
- Use a water-saving short cycle for lightly soiled clothes
- Regularly check the machine for leaks
- Pre-treat stains so you can use shorter cycles



Dishwashers are actually more efficient than washing dishes by hand—as long as the dishwasher is full when you run it. In fact, you can save 1,000 gallons of water per month by only running your machine when it is filled to capacity. Other ways to be efficient include:

- Installing a high efficiency dishwasher machine
- Air drying dishes to save the 1,500 watts per cycle necessary in the drying cycle
- Using the garbage disposal less frequently and instead, composting organic materials
- Keeping drinking water in the refrigerator during hot summer months so people don't run the water until it gets cold.

Resources

Energy Star appliances are the latest, energy saving choices on the market. You can select water-saving dishwashers, clothes washers and other major appliances that surpass all government regulations for energy efficiency. For more information, go to:

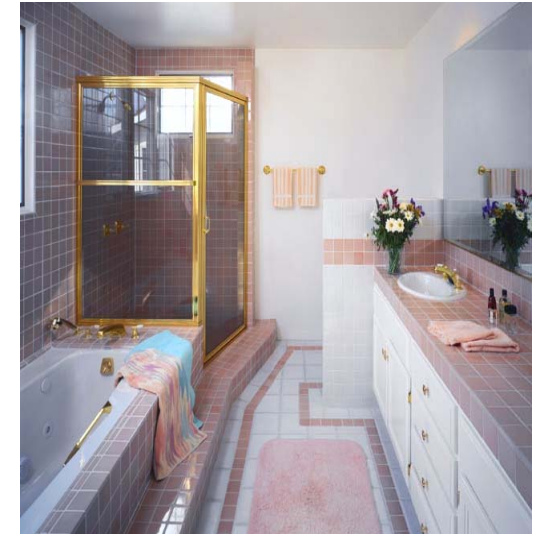
<http://www.energystar.gov/>

To print a copy of our *Water-Wise Residential Landscape and Irrigation Guide for Western Colorado*, go to:

www.thedripwebsite.com or
www.seleniumtaskforce.org

For more information, contact your local CSU Cooperative Extension office.

Wise Water Use for Inside Residential Homes



This brochure is a cooperative effort sponsored by the Gunnison Basin & Grand Valley Selenium Task Forces and Colorado State University Cooperative Extension. Funding was provided in part by the Colorado Department of Public Health and Environment through a grant from the Environmental Protection Agency; and by the United States Department of Natural Resources Conservation Service

Our Most Precious Resource

Water is our most precious resource in Western Colorado. Tree-ring and archeological evidence shows that extended droughts occur frequently in our region. It's important to use this valuable resource wisely so future generations can enjoy the beauty here as much as we do.



Wise-water use also keeps our rivers clean. Wasted water creates deep percolation that leaches pesticides, salt and selenium into the groundwater that eventually enters our streams and rivers. These pollutants are toxic to wildlife and fish, impact water quality downstream, and can sometimes damage structures.

It takes approximately 150,000 gallons of water each year to meet the needs of a family of four. That breaks down to about 400 gallons per day. Recent dry years indicate that we are in an extended period of drought, or severely dry conditions. It's time that we, too, make an effort to reduce water use.

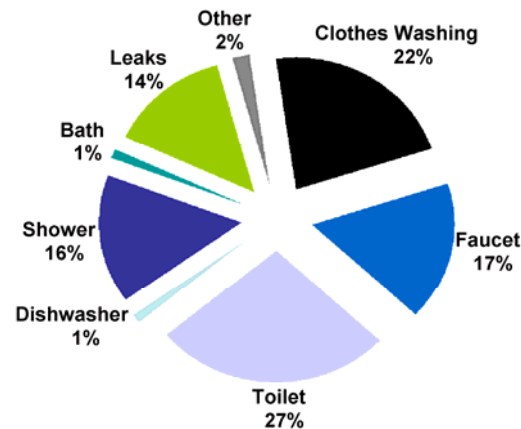
To monitor drought conditions in Colorado, go to: <http://www.ext.colostate.edu/menudrought.html>



Using Water Wisely Inside Your Home

The best way to keep our rivers clean and use water wisely is to make small but significant changes in our daily routines

Forty-five percent of a family's water consumption takes place inside the home. The chart below illustrates the distribution of water that you use.



Here are some water-saving steps you can take to significantly decrease water use for everyday functions.

In the Bathroom

Toilets use most of the water in your household. A family of four can save 14,000 to 25,000 gallons of water per year by:



- Switching from conventional toilets to new vacuum assisted, lower volume facilities
- Checking for and repairing leaks, which can save up to 600 gallons per month
- Making sure the flapper is working properly
- Flushing only when absolutely necessary

Your water utility may even offer rebates for replacing conventional toilets.

Showerheads currently manufactured in the U.S. have a flow-rate of 2.5 gallons per minute or less. To save water:



- Install a low-flow showerhead
- Limit showers to five minutes
- Turn off the water while lathering up with soap and shampoo
- While waiting for the hot water, let the water collect in a bucket. Then water your plants with that water.